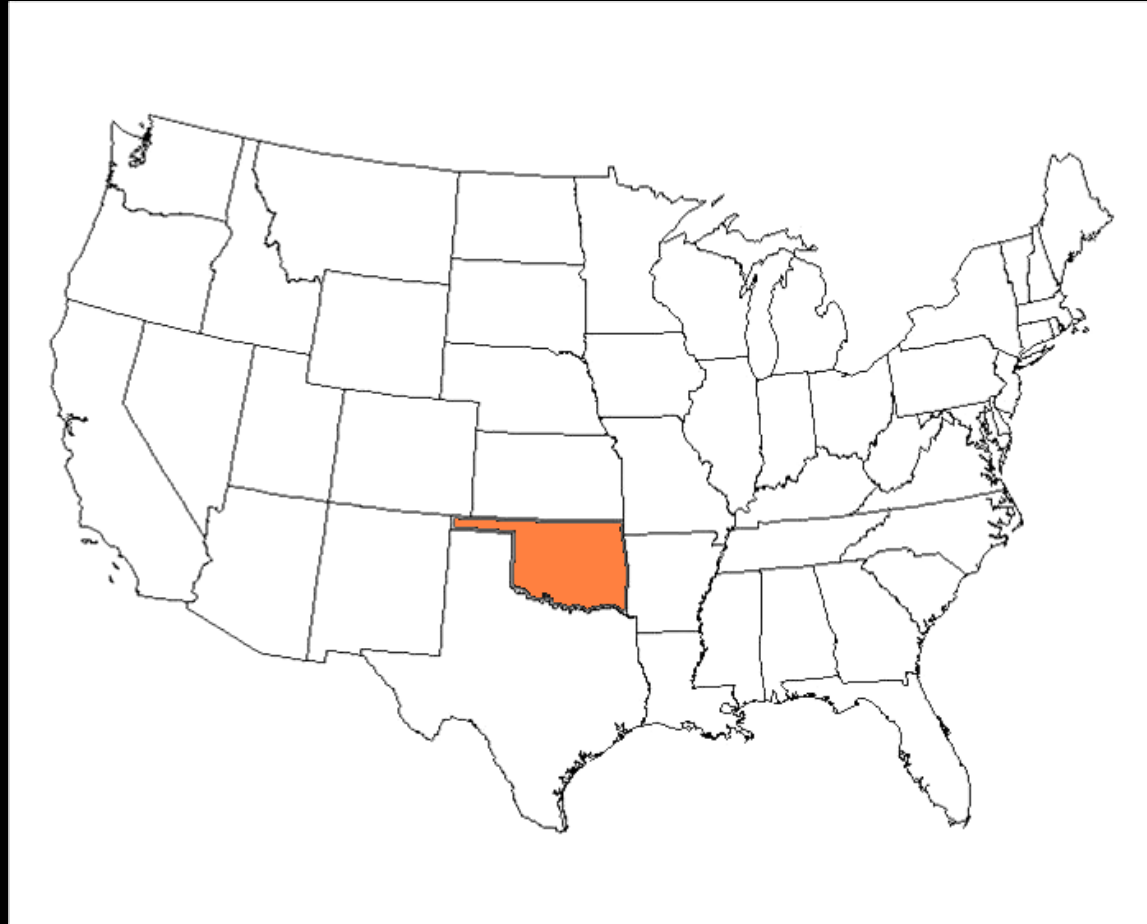




WELCOME
TO
OKLAHOMA

Oklahoma



69,898 sq. mi.



Oklahoma: Native America



- ▶ Choctaw for “red people”
- ▶ 39 Native American Tribes
- ▶ 2nd largest tribal population in USA



Oklahoma: State Flag



- ▶ Red flag 1911–1925, after Russian revolution 1917 it was disfavored. Red flag w/ white star reflected communism.
- ▶ New– Osage warrior shield, 7 eagle feathers, peace pipe, olive branch, 6 white crosses (stars), blue background from a flag the Choctaw soldiers carried during the Civil War. “Oklahoma” added in 1941.



Oklahoma: History



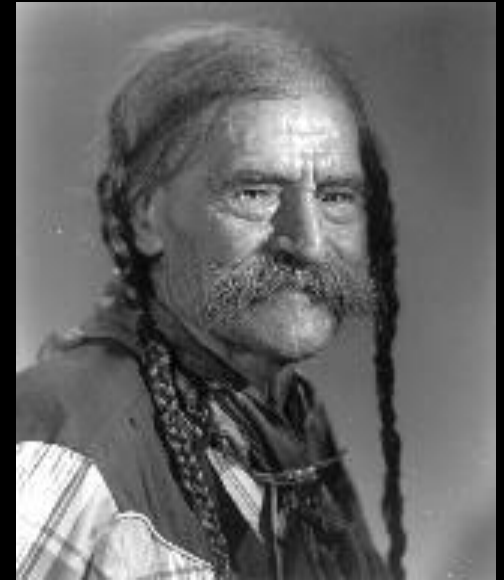
Land run of 1889



- ▶ High noon April 22, 1889
- ▶ 50,000 people settled 2 million acres in central Oklahoma with 160-acre claims
- ▶ Early claim stakers hid out and arrived at the choice homesteads – “Sooners”



Frank Eaton (Pistol Pete) U.S. Marshal – Indian Territory



Statehood



Nov. 16, 1907



Oklahoma: The Land

- ▶ More shoreline than Atlantic and Gulf coasts combined
- ▶ Port facilities to the Gulf of Mexico
- ▶ Nation's crossroads



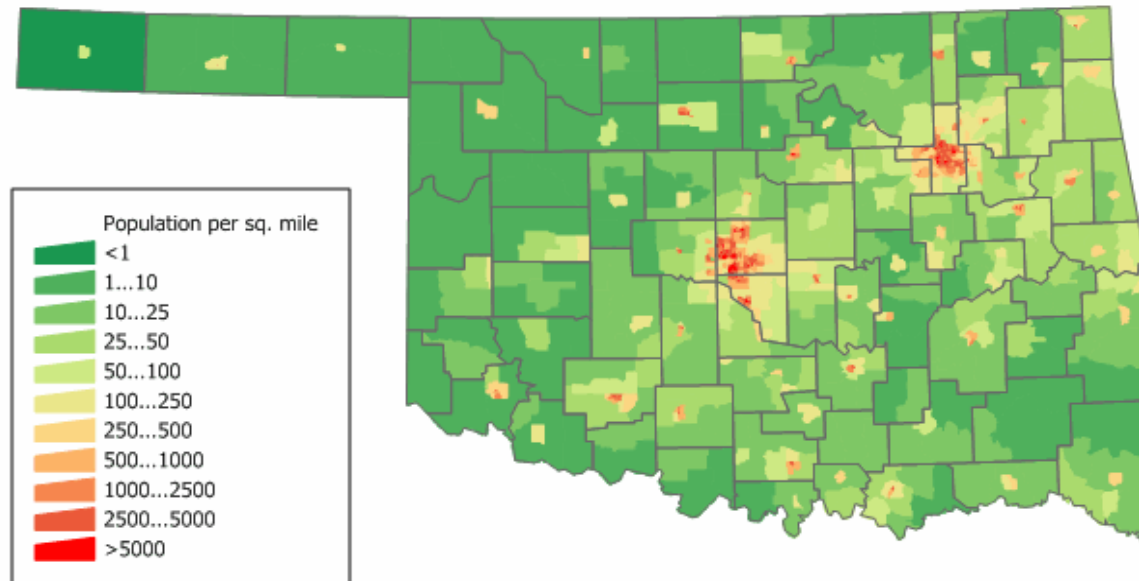
Natural Diversity



5 distinct climatic zones
11 different ecosystems
2,500 soil types



Population – 3.6 M



Source: U. S. Census Bureau
Census 2000 Summary File 1
population by census tract.



EPA – Ecoregions

* EPA Ecoregions of the U.S.

Click on region of the map to view more information.

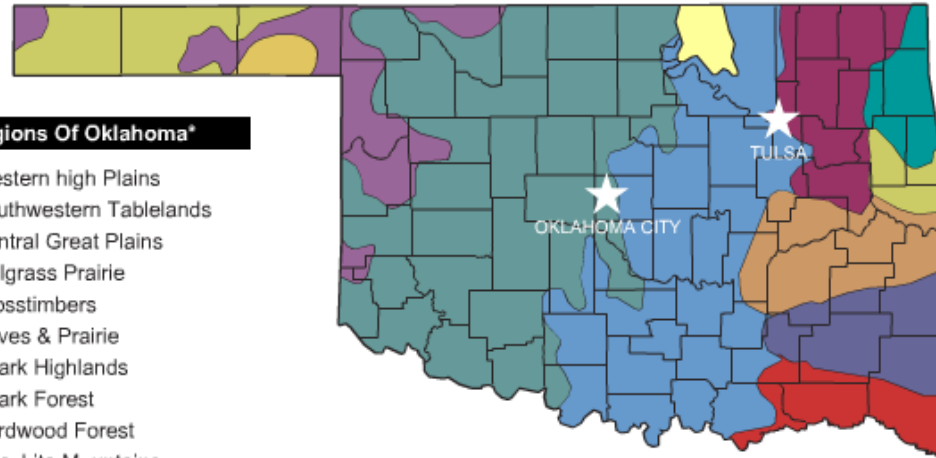
11 Ecoregions Of Oklahoma*

- 1. Western high Plains
- 2. Southwestern Tablelands
- 3. Central Great Plains
- 4. Tallgrass Prairie
- 5. Crosstimbers
- 6. Caves & Prairie
- 7. Ozark Highlands
- 8. Ozark Forest
- 9. Hardwood Forest
- 10. Ouachita Mountains
- 11. Cypress Swamps & Forest

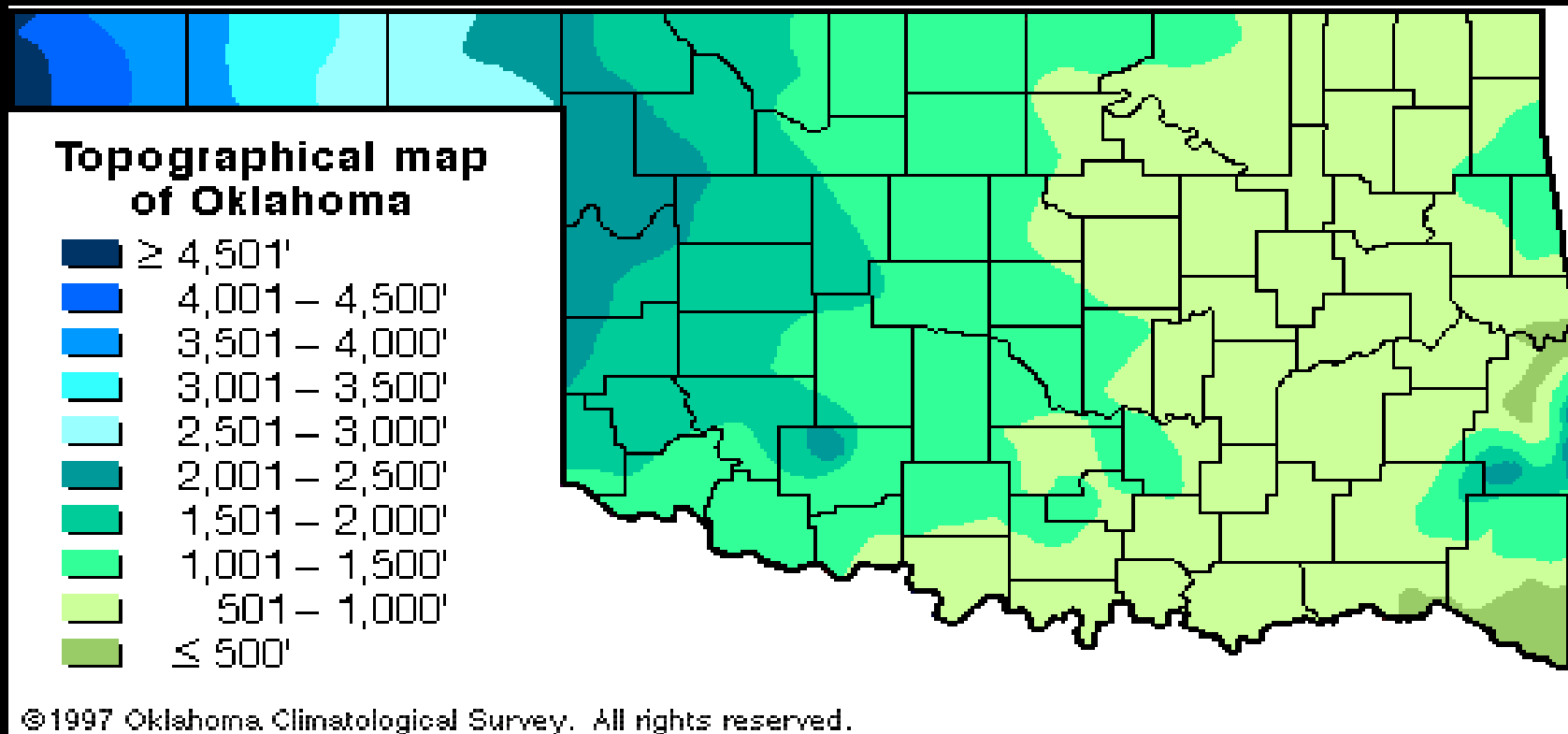
**U.S. Environmental Protection Agency*

Unofficial Ecoregion

- 12. Urban Turf
Oklahoma City
Tulsa



Topography



▶ 289 – 4973 ft



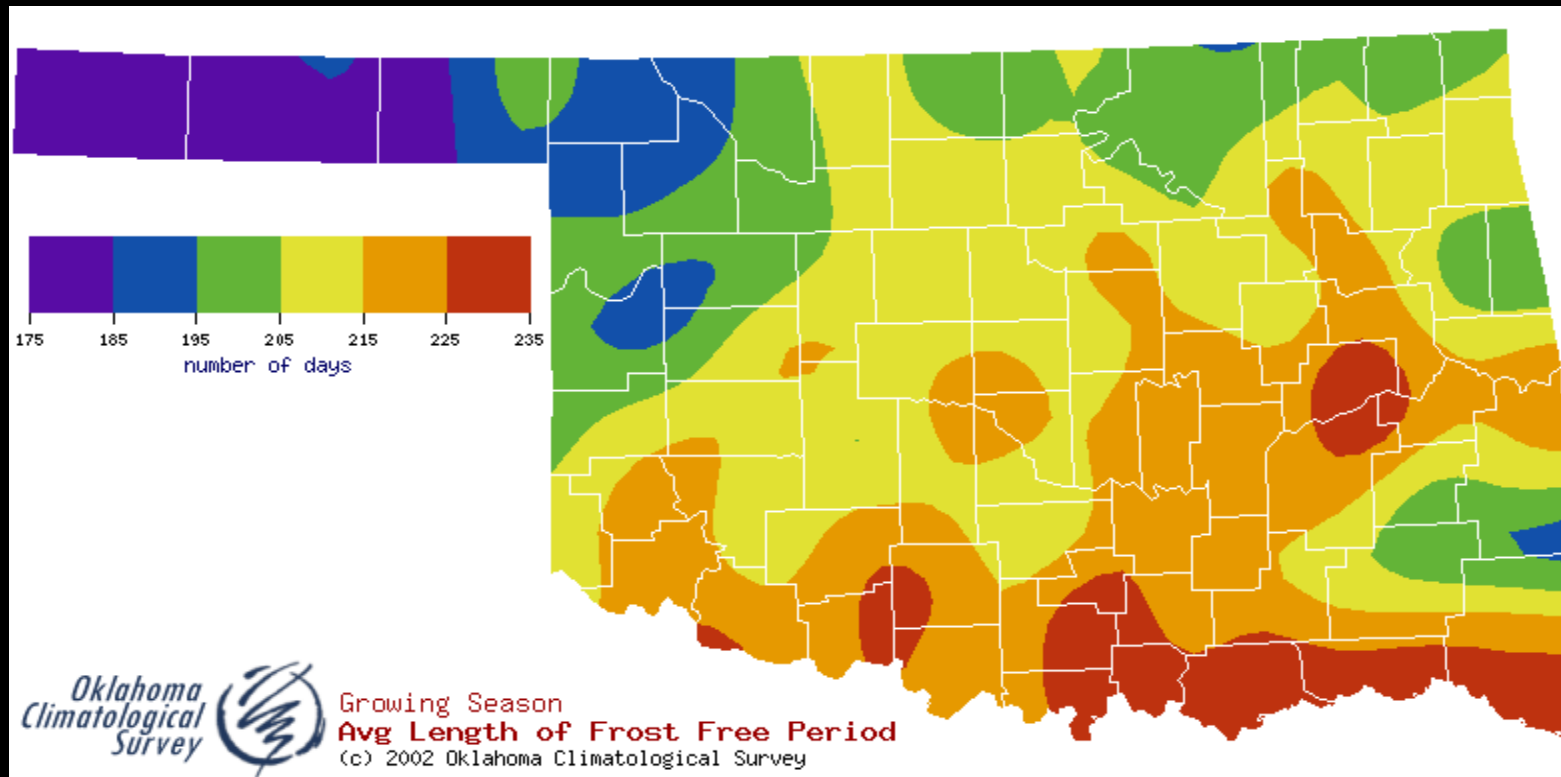
Oklahoma: The Weather

▶ Four Seasons

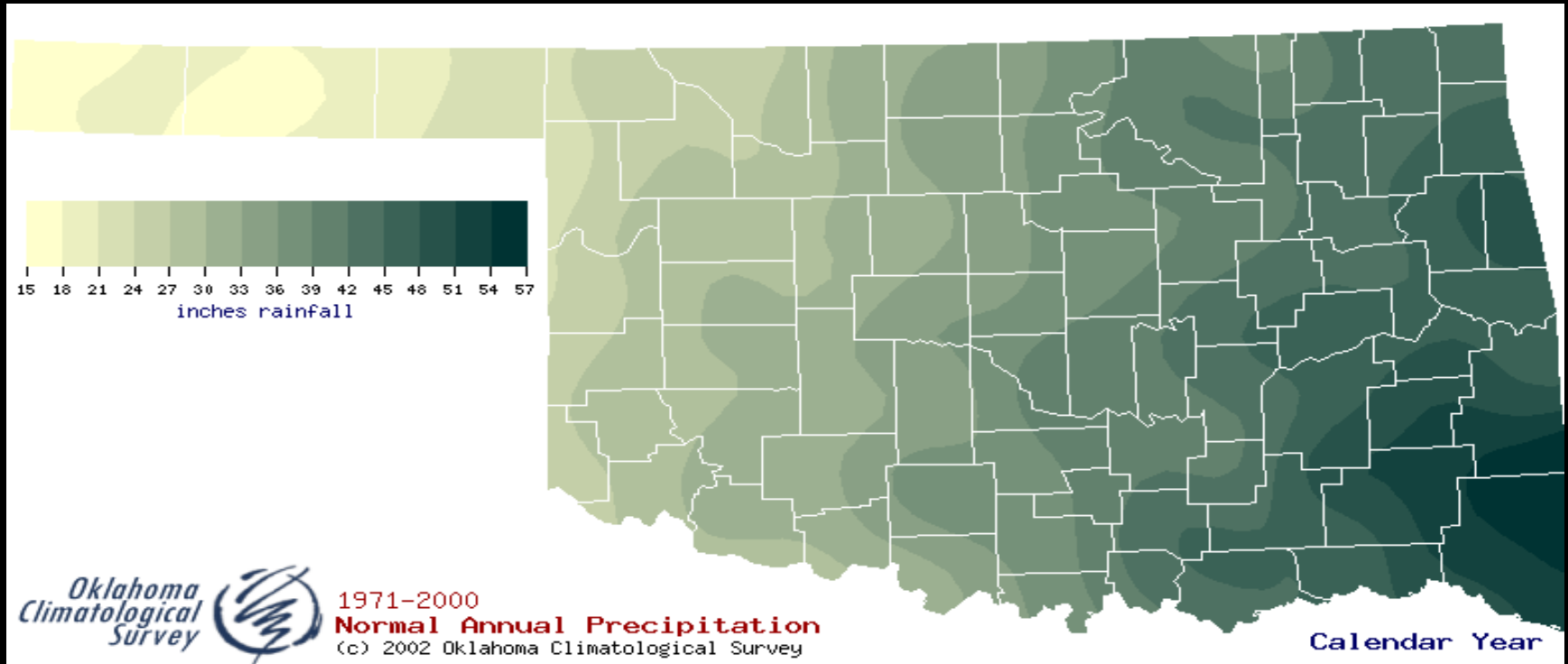
- Hail
- Tornado
- Drought
- Flood



Frost-Free Days

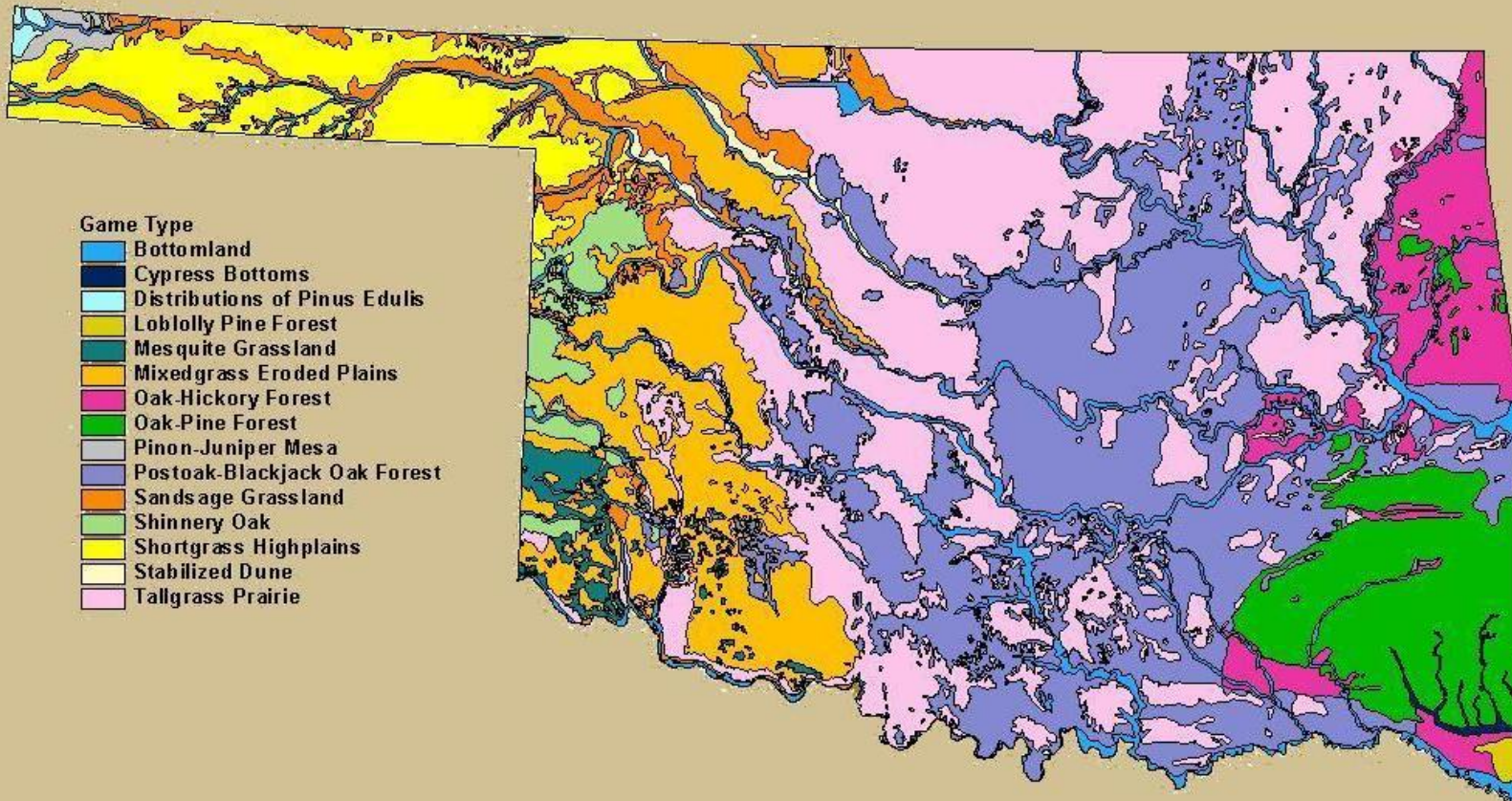


Average Precipitation



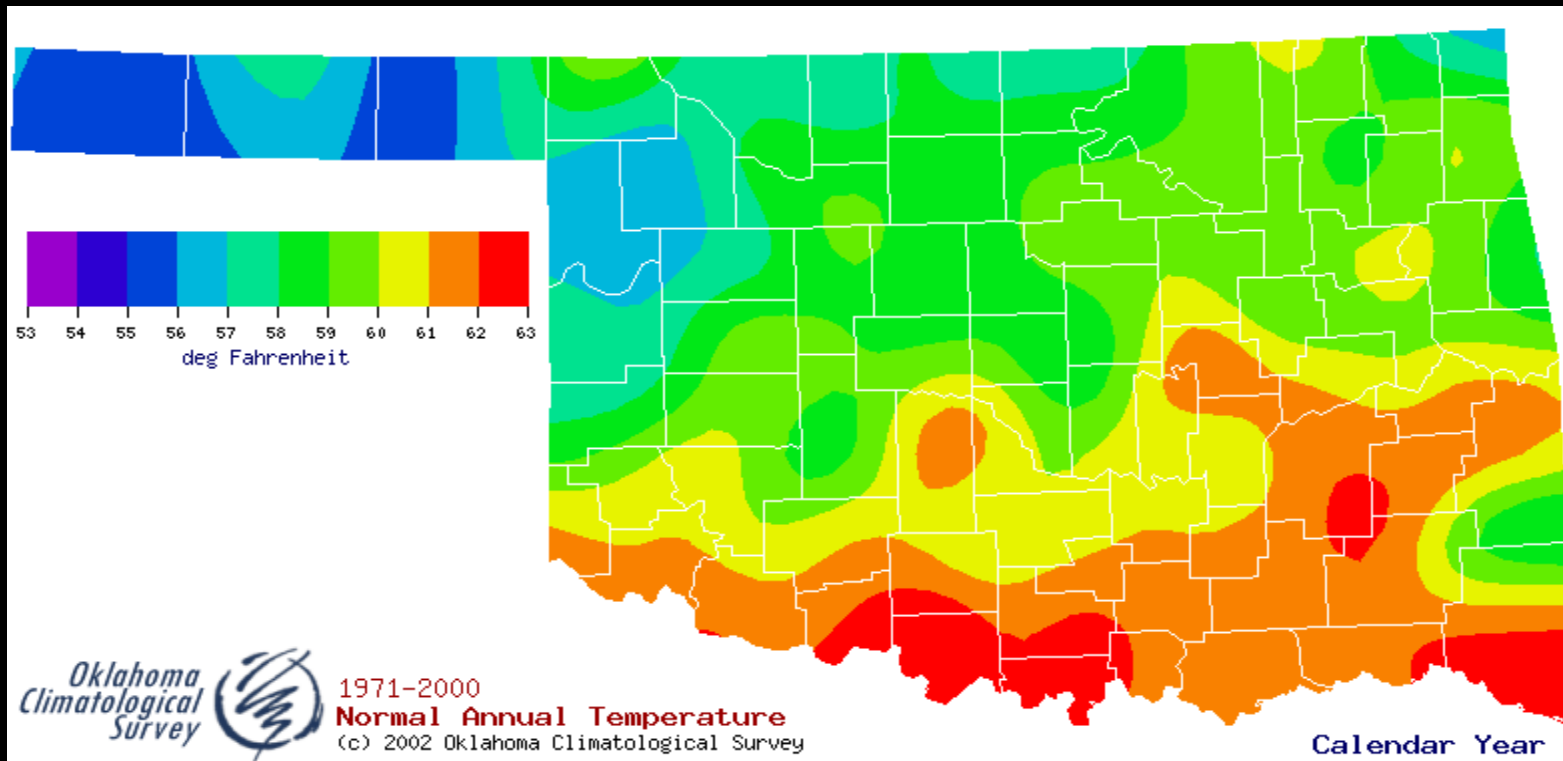
▶ 14 – 55 in.



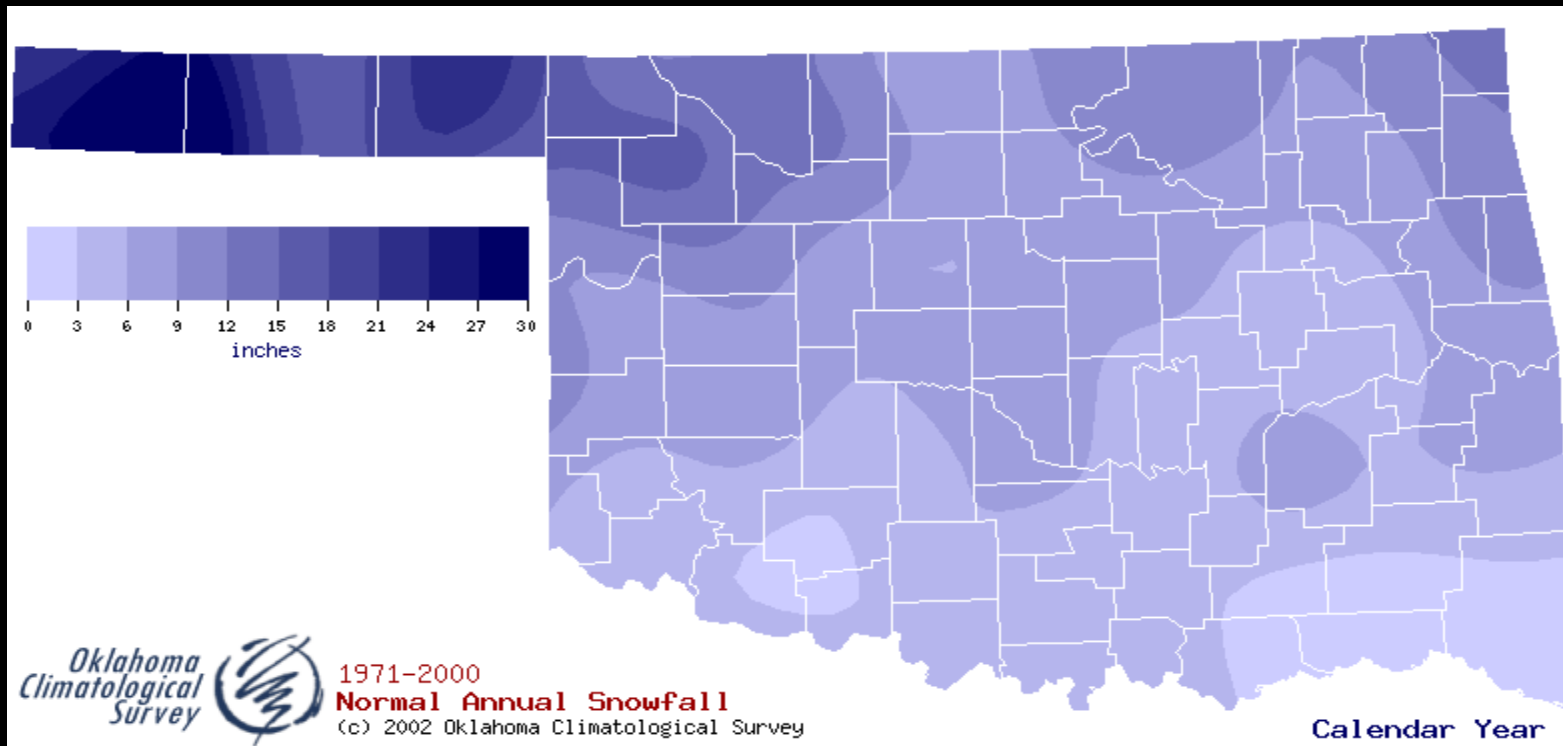


Map courtesy of Oklahoma Biological Survey

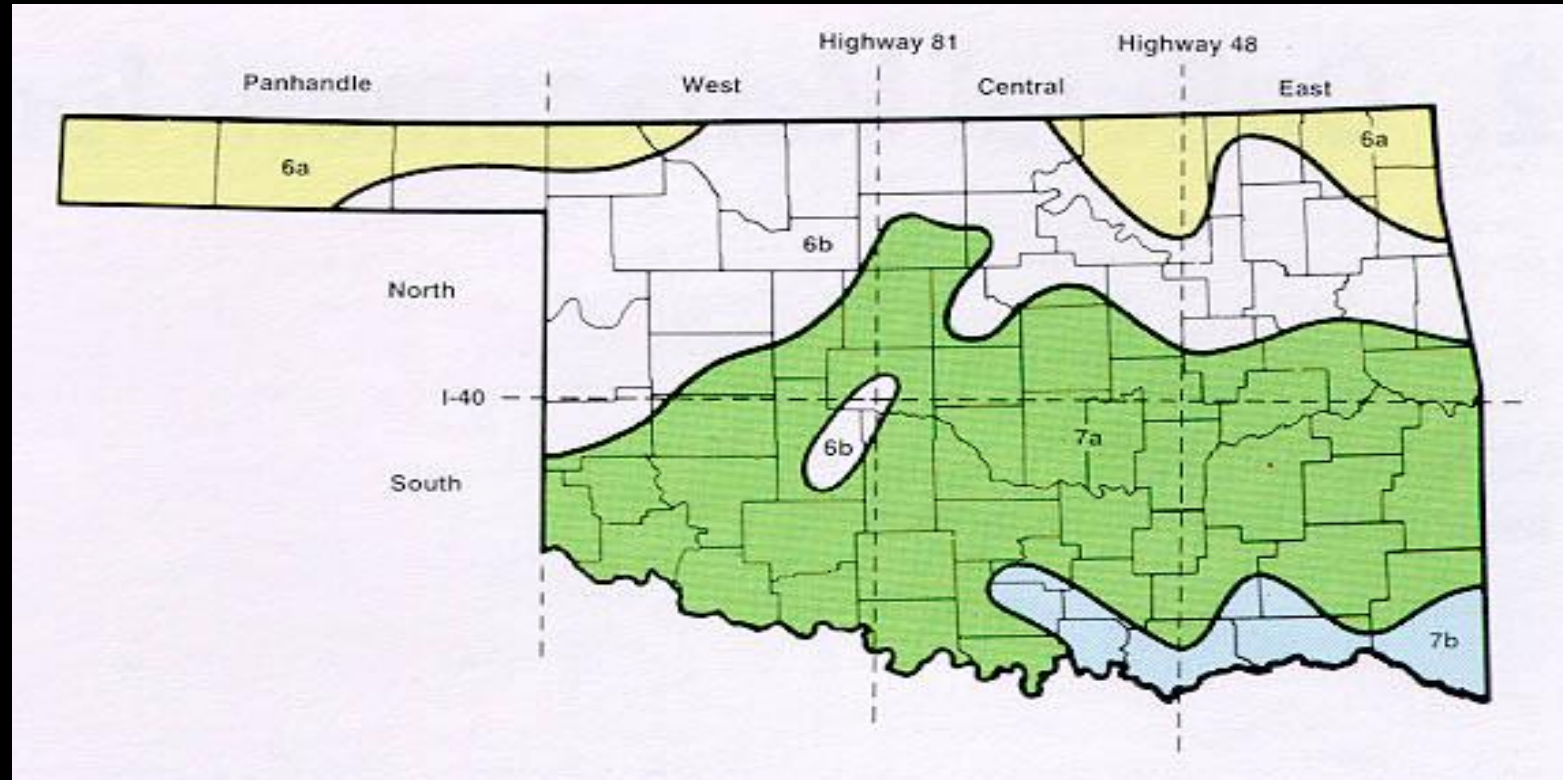
Average Temperature



Average Snowfall



Plant Hardiness Zones



▶ Zones 6a – 7b



Oklahoma Weather

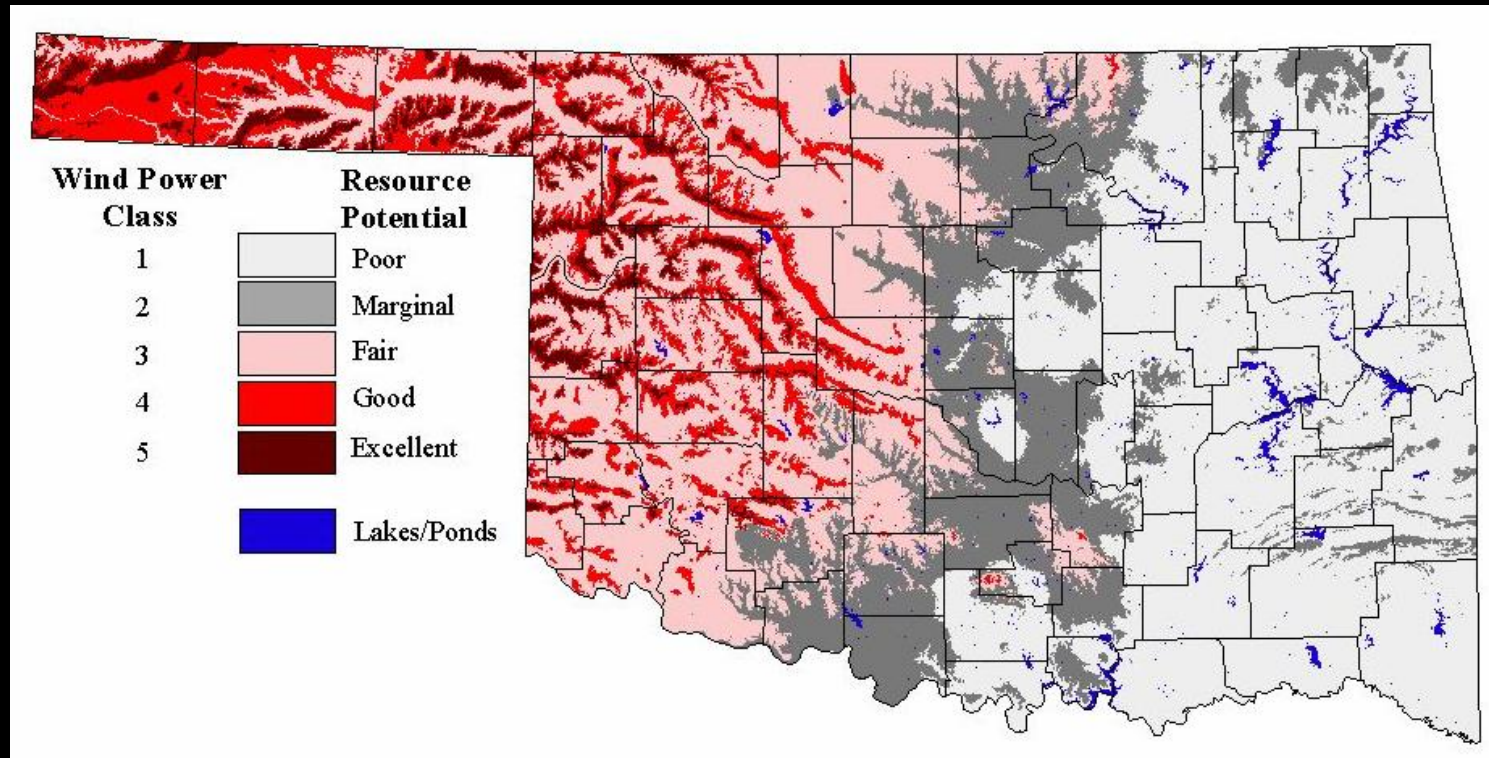
- ▶ It's mostly about the WIND



Oklahoma Wind Resource Map

Estimated Wind Speeds at 50 meters

Map Version Date: 06/01/06

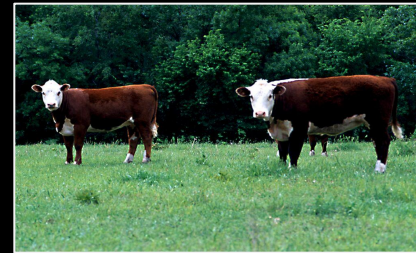


Oklahoma
owpi Wind
Power
Initiative



Oklahoma: Leading Industries

- ▶ Energy
- ▶ Agriculture
- ▶ Aerospace
- ▶ Defense



Oklahoma: Agriculture

Agriculture trails only oil and natural gas in state economic impact

- ▶ 34 million acres farmed in state
- ▶ 84,000 farms
- ▶ 5.4 million cattle (2008)
- ▶ 166.5 million bushels of wheat (2008)



Agriculture –2008

- ▶ Cattle = \$ 2.436 billion
- ▶ Wheat = \$ 1.104 billion
- ▶ Hogs = \$ 558 million
- ▶ Broilers = \$ 554 million
- ▶ Hay = \$ 479 million
- ▶ Dairy = \$213 million

- ▶ Horse Country, USA



Oklahoma State University



- ▶ ***An 1862 “land-grant” institution***
 - ▶ ***5-campus system***
 - ▶ ***9 different colleges***
- ▶ ***\$138 million in Total Research Expenditures for 2008***



Oklahoma A& M

Oklahoma AES

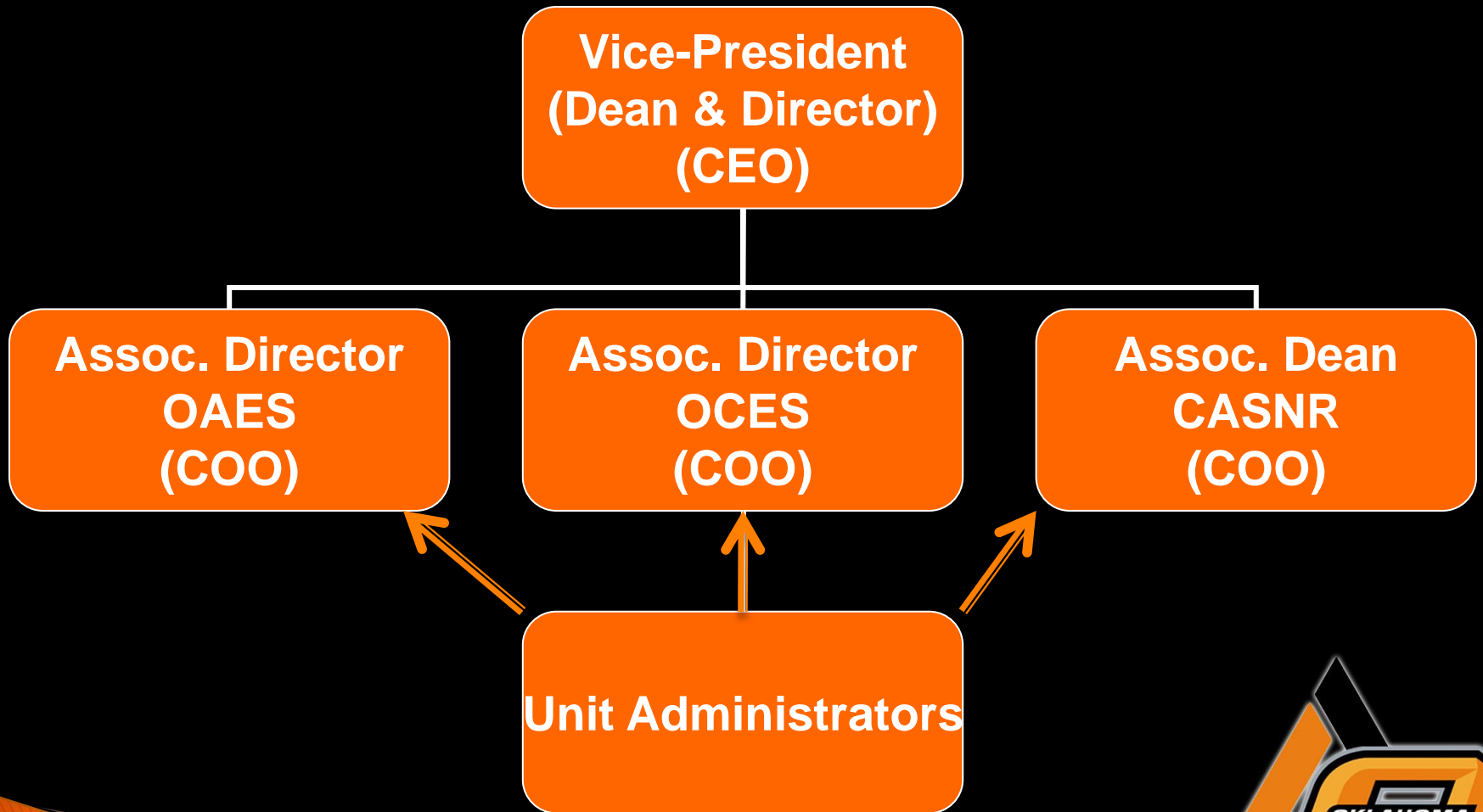


1890





DASNR



Nine Academic Departments

1. Agricultural Economics
2. Agricultural Education, Communications, and Leadership
3. Animal Science
4. Biochemistry and Molecular Biology
5. Biosystems and Agricultural Engineering
6. Entomology and Plant Pathology
7. Horticulture and Landscape Architecture
8. Natural Resource Ecology and Management
9. Plant and Soil Sciences



Other DASNR Programs

- ▶ Family and Consumer Sciences
- ▶ 4-H Youth Development
- ▶ Ag Leadership Program
- ▶ Foundation Seed Stocks
- ▶ Food and Agricultural Products Center
- ▶ Field and Research Services Units



Oklahoma Agricultural Experiment Station





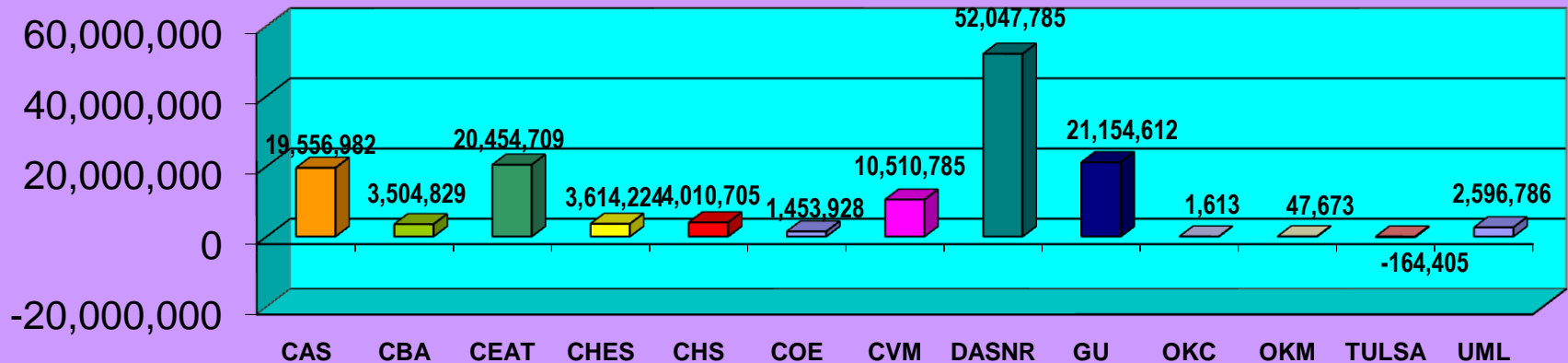
Oklahoma Agricultural Experiment Stations



Research Expenditures

> \$ 52,000,000

2008 Total Research Expenditures by Agency

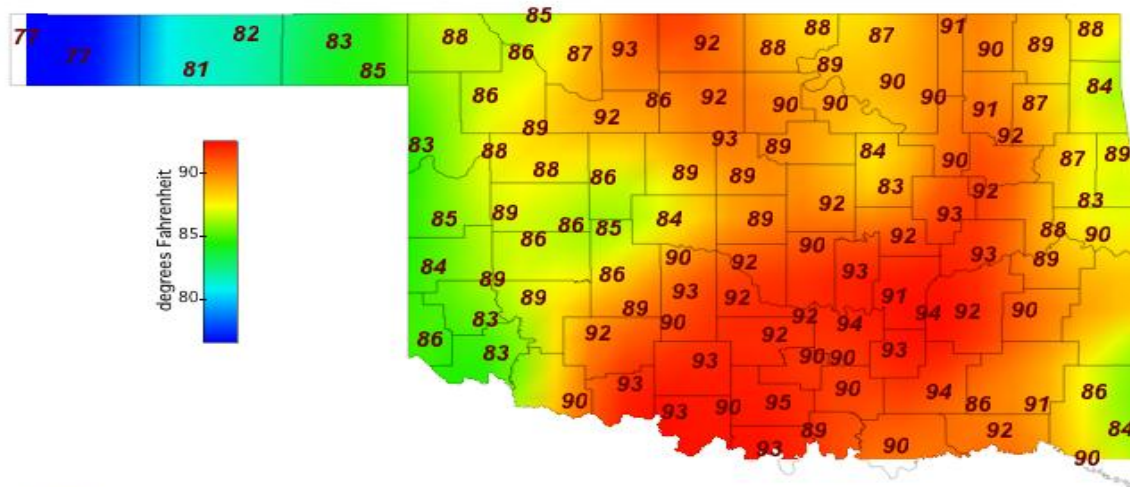


OAES

- ▶ RESEARCH PROGRAMS



Oklahoma Mesonet



Temperature: Air at 1.5 Meters
08-17-2006 08:35 PM CDT



Oklahoma Mesonet

- ▶ 1982 Oklahoma scientists realized the need for a statewide monitoring system.
- ▶ 1987 OSU & OU developed a partnership.
- ▶ 1991 first Mesonet towers installed & by 1993, 108 were completely operational.
- ▶ No other state in the nation has the capability to measure environmental conditions at so many sites.



National Weather Center



Energy



Oklahoma: Energy

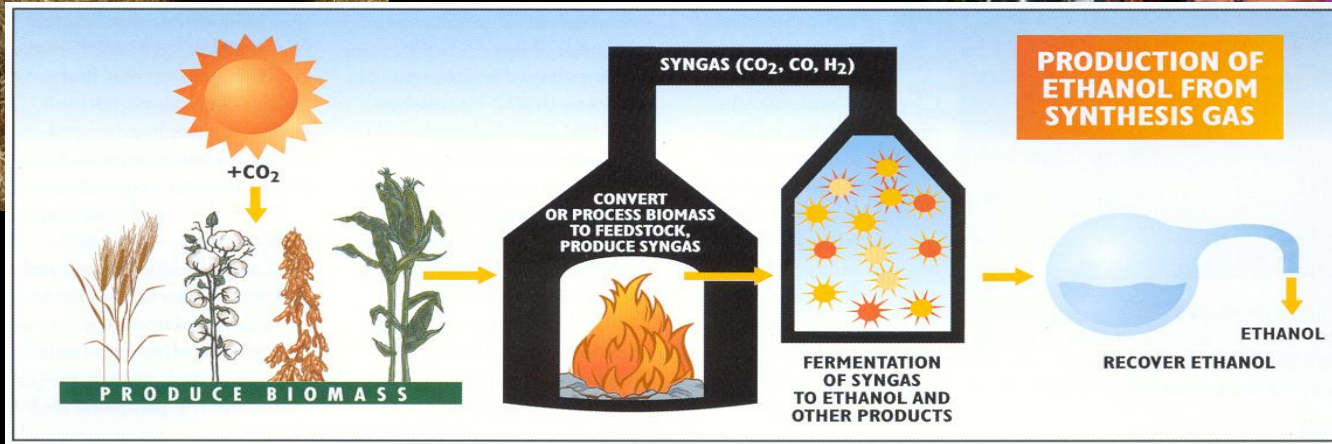
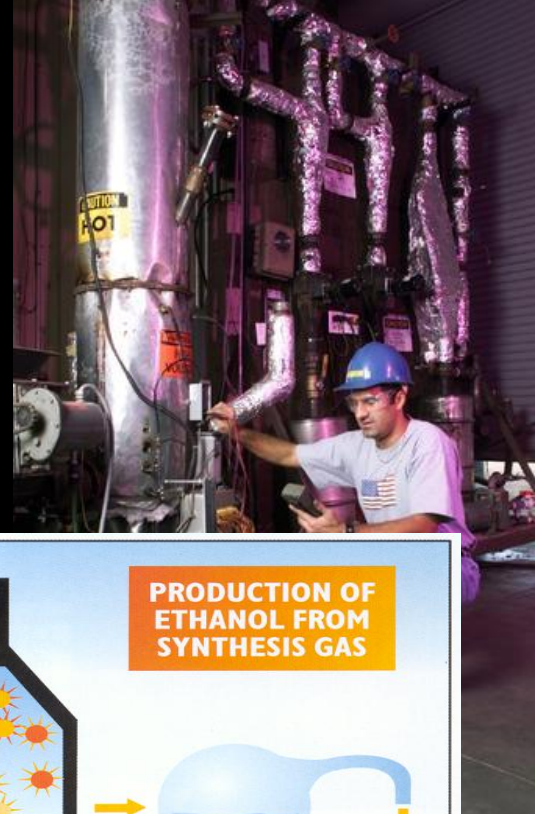
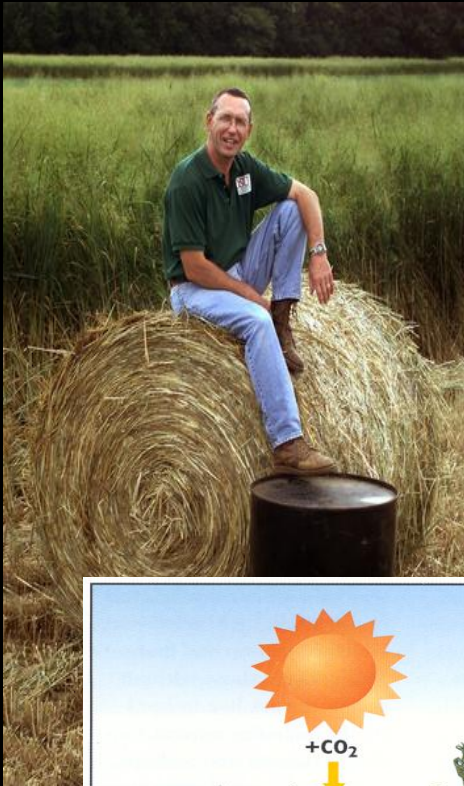
- ▶ **Crude Oil** 178,000 barrels/day –2003– 6th nation, 3% of US production
- ▶ **Natural Gas** 1.662 trillion cubic ft –2003– 2nd nation, 9% of US production
- ▶ 24th in total energy consumption
- ▶ 1.5 quadrillion btu's



Switchgrass



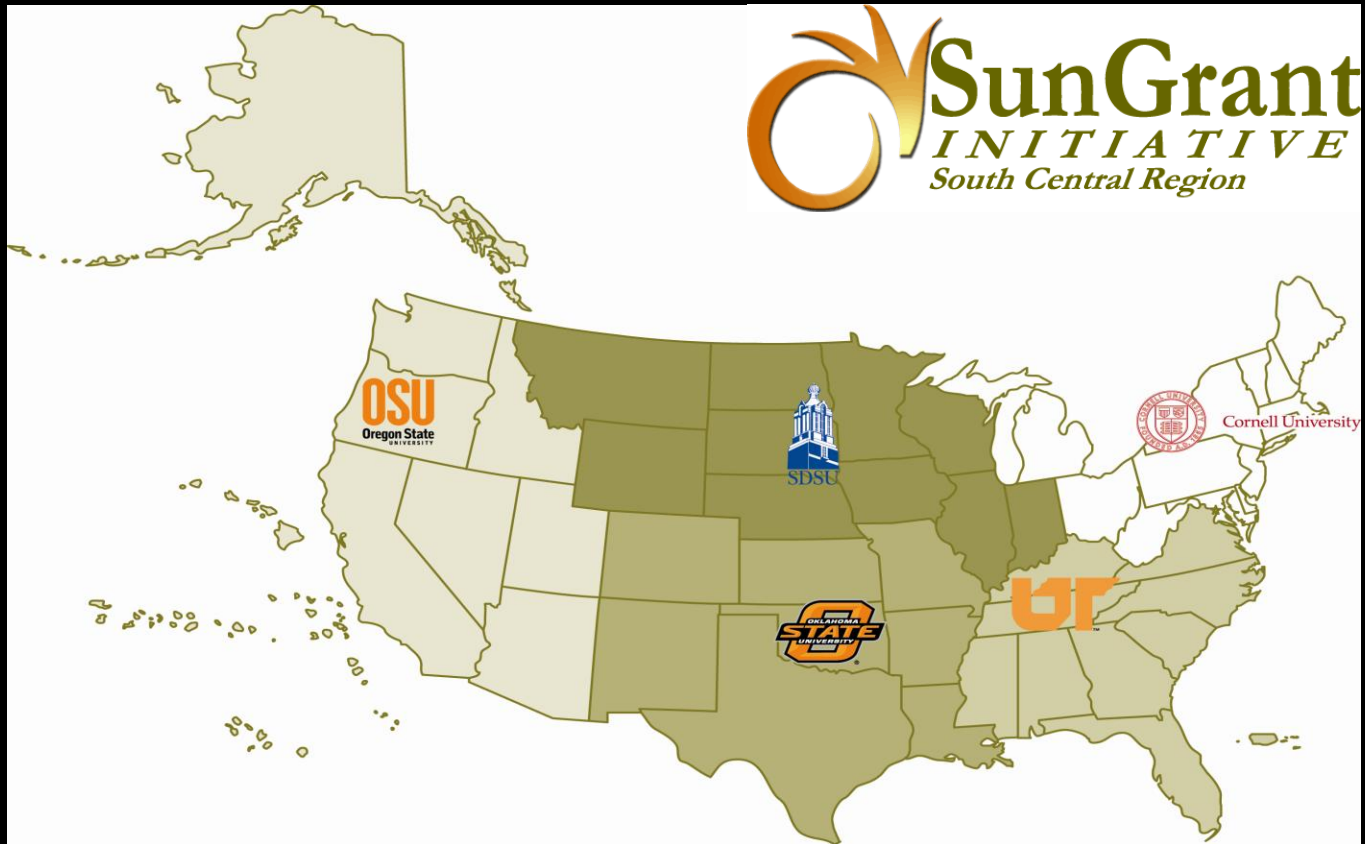
Gasification



Sweet Sorghum



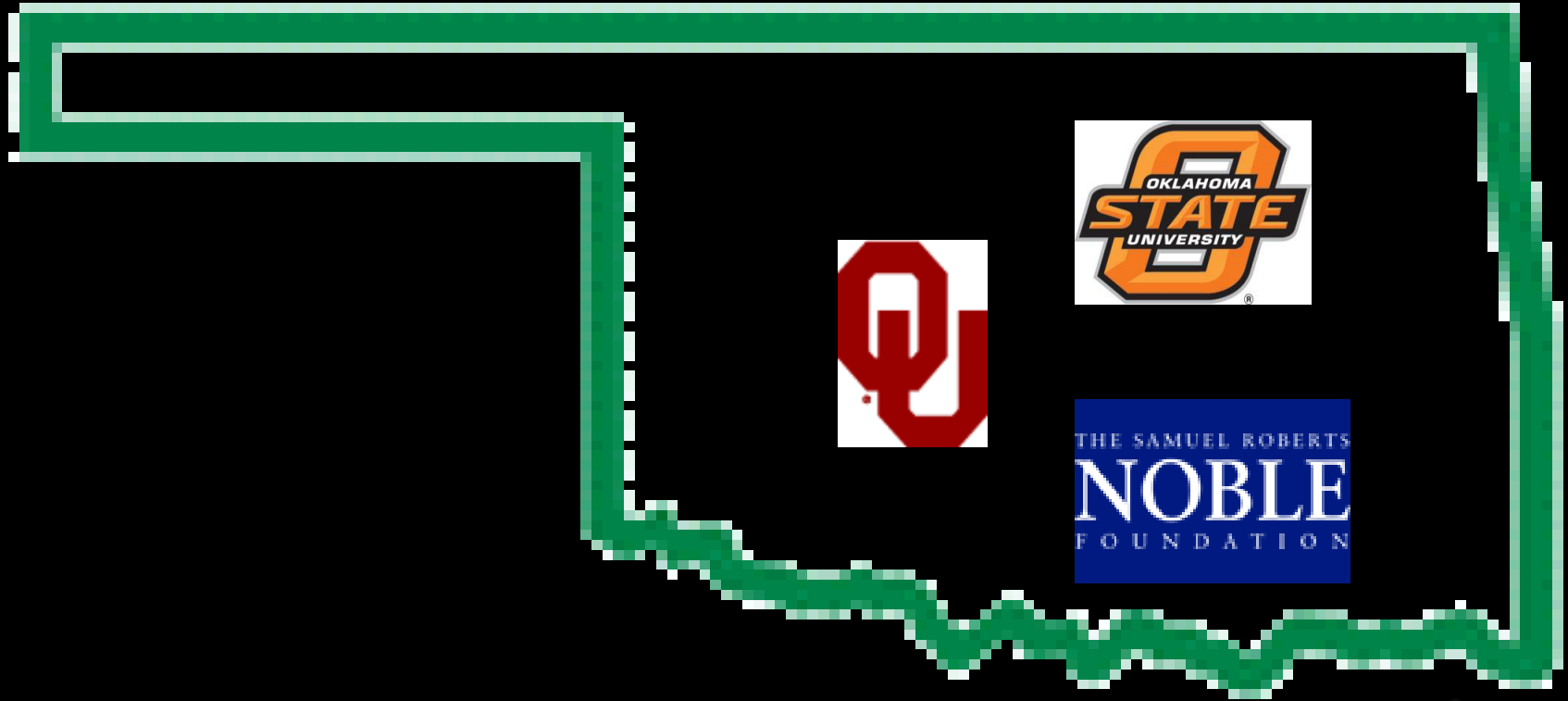
SunGrant



U.S. DEPARTMENT OF
ENERGY



Oklahoma BioEnergy Center



- ▶ *\$10 million, year one*



Bio-Security



NIMFFAB



- ▶ DASNR
- ▶ OSU-Tulsa Health Sciences



Precision Agriculture



Precision Agriculture



GreenSeeker technology - CIMMYT



Precision Agriculture



Precision Ranching



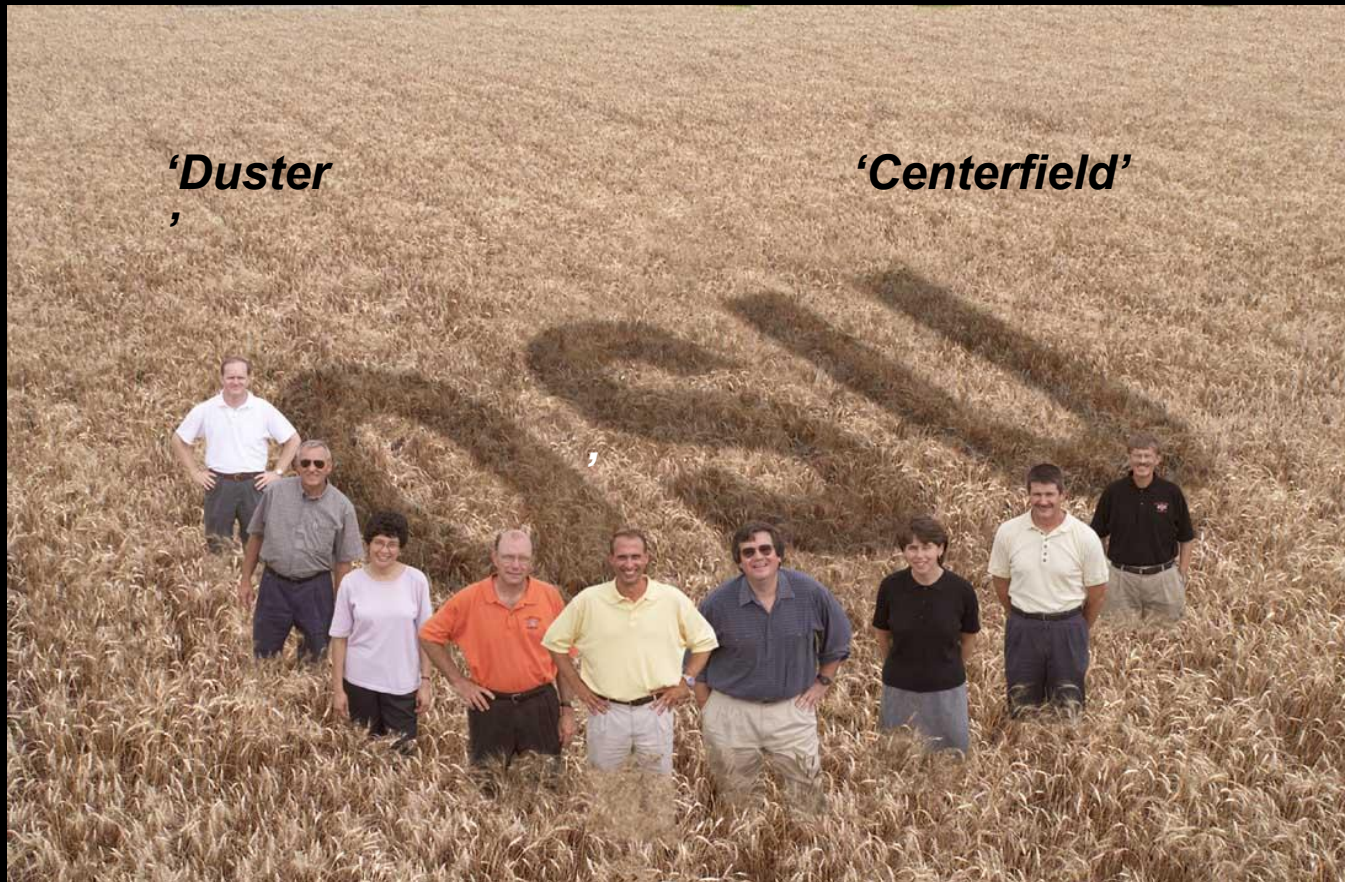
'It's one of those universal remotes. It controls my TV, my VCR, and my cows



WHEAT



Wheat Improvement Team



Wheat Pasture Research Station



Stored Products Research and Education Center



Livestock



Beef Cattle Nutrition and Management



Range Management



Robert M. Kerr Food & Agricultural Products Center



1997





Food Safety

- ▶ Robert M. Kerr Food and Agricultural Products Center



Value Added Products



Post Harvest Processing



Wine Industry

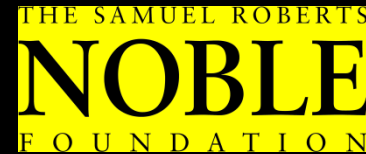


Pecans





Partnerships



OKLAHOMA

Welcomes You!

